

SEATHEATER™

Seat Heating Kit

★ New Design

This kit works installed directly onto vehicle seats, or can be used with seat covers like Covercraft SeatSaver™ or SeatGloves® and most breathable aftermarket seat covers.

Features & Benefits:

- Now heated seat elements can be easily installed on any seats with formed or adjustable headrest, as well as beneath most fitted aftermarket seat covers made with breathable fabrics.
- “Plug & Play” easy installation, powered by the vehicle accessory power outlet.
- With SeatSavers, they can be installed on both the front or rear seats (vehicle accessory power outlet required).
- PTC heating elements, Made in USA by Check Corp., radiate heat evenly and self-regulate for comfort.
- Patented technology in the PTC heating elements ensures uniform warmth with no potential for overheating.
- Covercraft designed unique “envelopes” to securely hold the heating elements, with grip material on the base and a layer of spacer-knit fabric on the top, to allow even heat transfer.
- Our use of “envelopes” allows SeatSavers and SeatGloves to remain machine washable when soiled.

The cushion heating element is 11”L x 9.75”W and the back/lumbar heating element is 8”L x 9.5”W (dimensions are for the live area, not including the tail).



Seat heater Kit (Includes units for two seats)



Special “envelopes” for heating pads



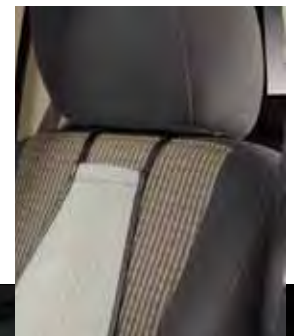
Power plug with INDIVIDUAL on/off heater controls

This Kit Consists Of:

- A PAIR of seat heater elements (for two seats), for both the seat base and seatback.
- Special “envelopes” for all heating pads (4).
- Wiring harness that PLUGS INTO THE VEHICLE ACCESSORY POWER OUTLET.
- A power plug with INDIVIDUAL on/off heater controls.

Easy to Install –

1. – Insert the heating elements into each of the SeatHeater™ envelopes.
2. – The envelope with the long strap and side release buckle is for each seat base. The envelope with the shorter strap connects around the headrest.
3. – Place SeatHeaters onto the seats, carefully push the “tails” with wire connections between the seatback and seat base.
4. – Install seat covers over the SeatHeaters.
5. – Attach wire harness and plug into the vehicle accessory power outlet.



100 Enterprise Blvd., Pauls Valley, OK 73075

Part No. SE1002GY - Gray
SE1002TN - Tan

PTC

Positive Temperature Coefficient

PTC technology delivers major performance, safety and reliability benefits.

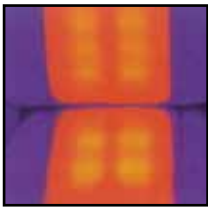
Enhanced User Comfort & Safety

The delivery of a constant, comfortable heat level offers added safety and protection against over-temperature conditions commonly found in comparable wire heaters.

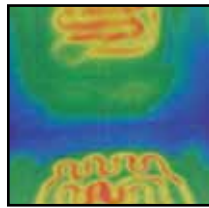
Long Life Reliability

PTC heaters have passed extensive reliability and durability tests, virtually eliminating field problems and warranty issues.

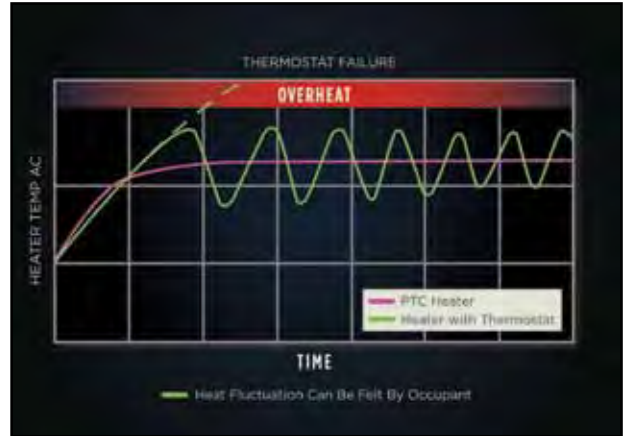
Infrared Heat Profile



PTC Heater



Wire Heater



Self-Regulating Temperature

PTC heaters incorporate an automatic temperature ceiling which delivers accurate end-user comfort, as well as reliable fail-safe performance, to ensure safety and avoid warranty concerns.

Faster-To-Ideal Temp

Your customer will enjoy the comfort of rapidly reaching optimum heat and the uniformity of even, continuous warmth.

Seat Heater Technology Comparison

Category	PTC Heater	Wire Type Heater	Carbon Fiber Heater
Self Regulation	Yes	Sensor Required	Sensor Required
Short Circuit Result	Self-cauterizes	Burn potential	Burn potential
Fold-Over Result	<5°C Increase	30°C Increase	15°C Increase
Current Draw	2.5A steady rate	4.5A steady rate	3.9A steady rate
Independent Diagnostics	Not Required	Required	Required

Warranty

SeatHeaters carry a 1 year warranty against becoming unserviceable during normal use.